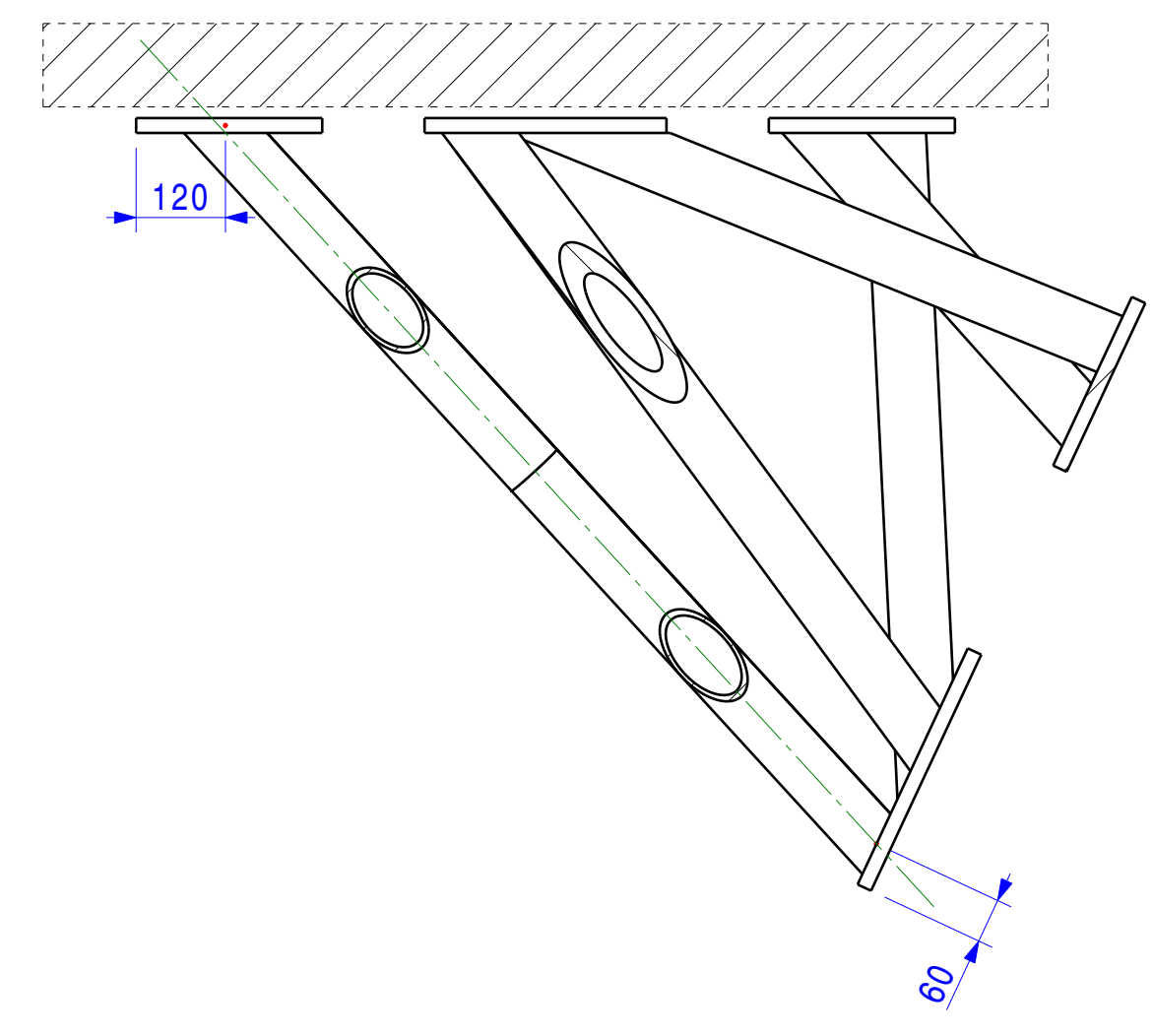
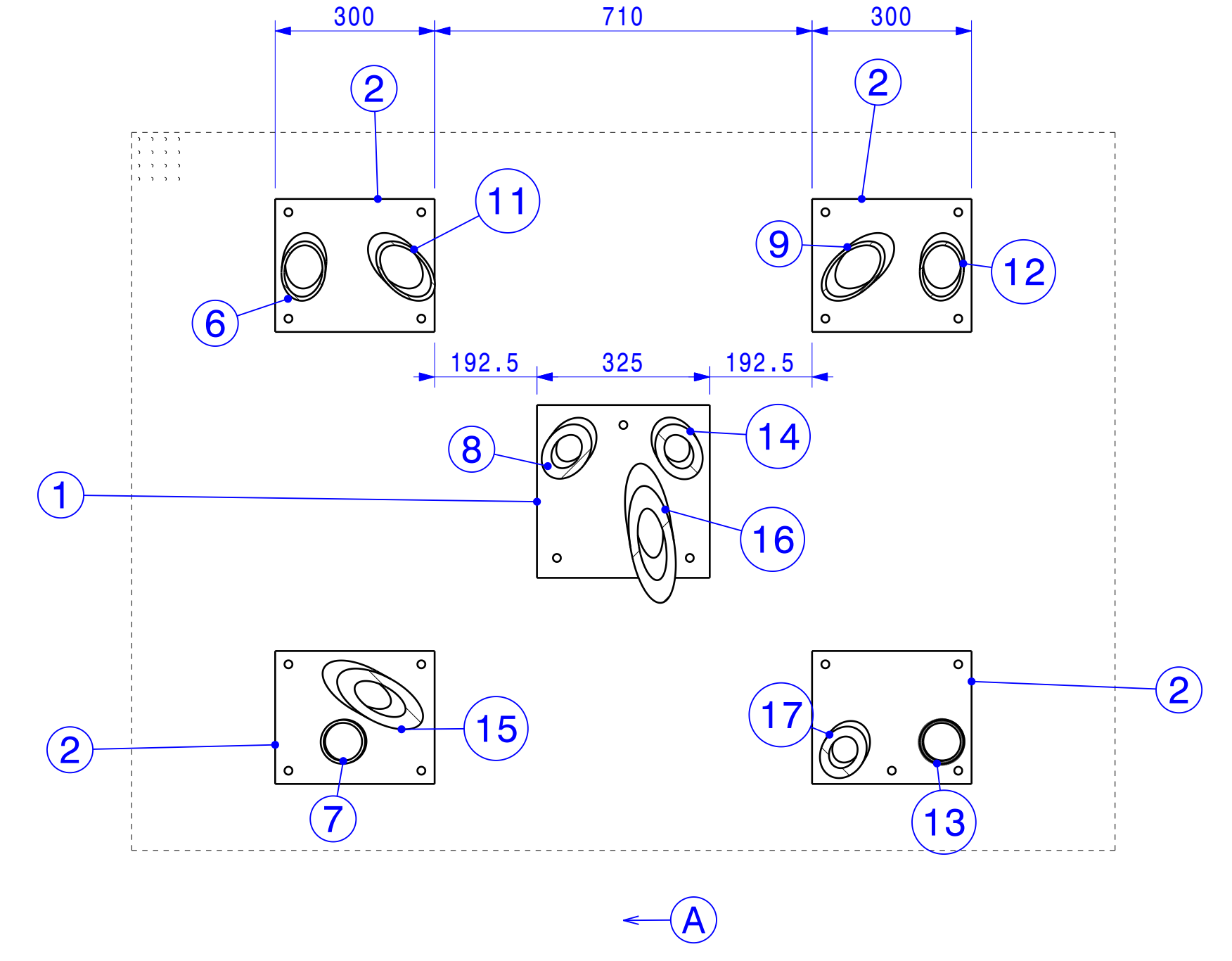


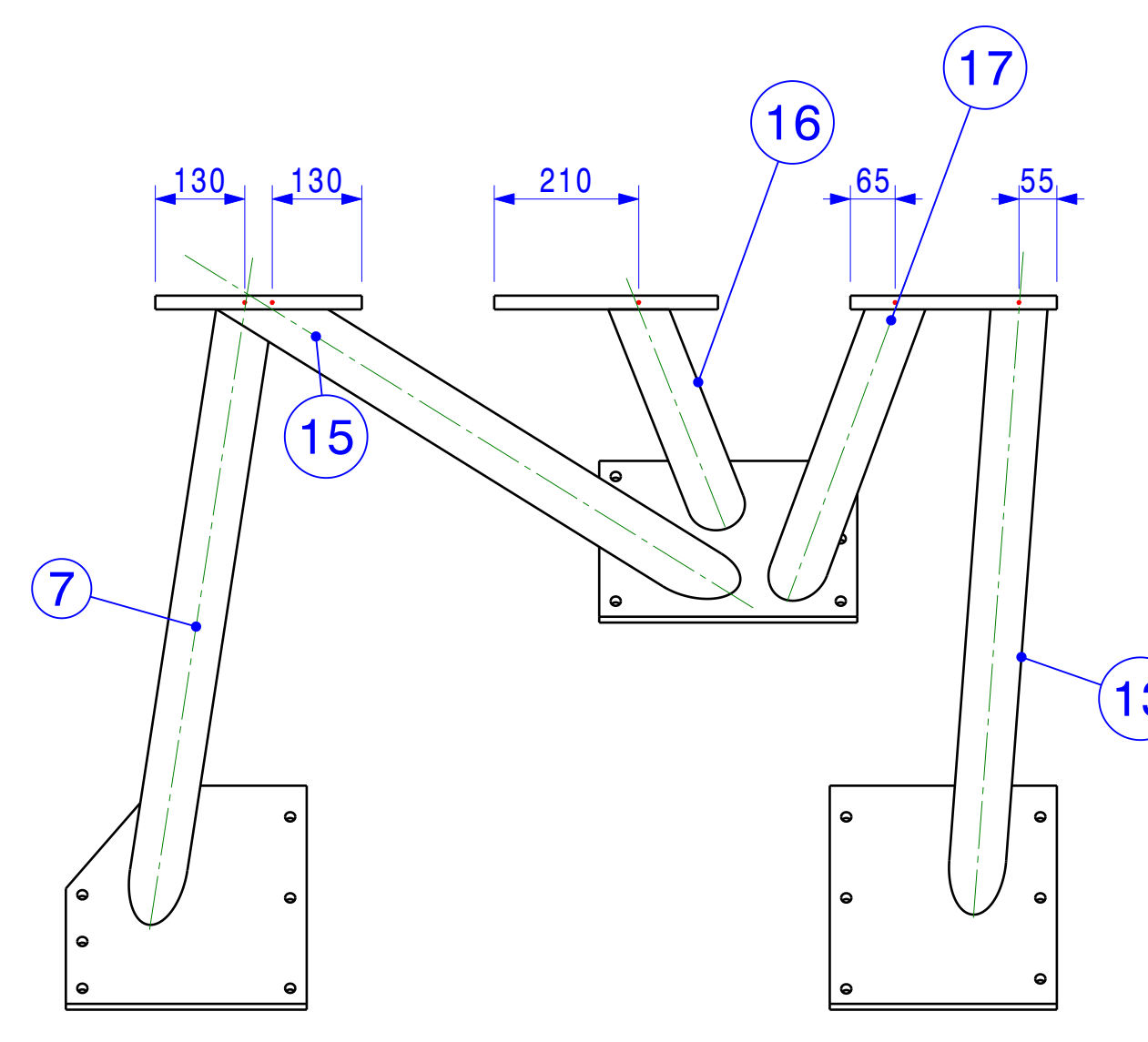
Section E-E
Scale 1:10



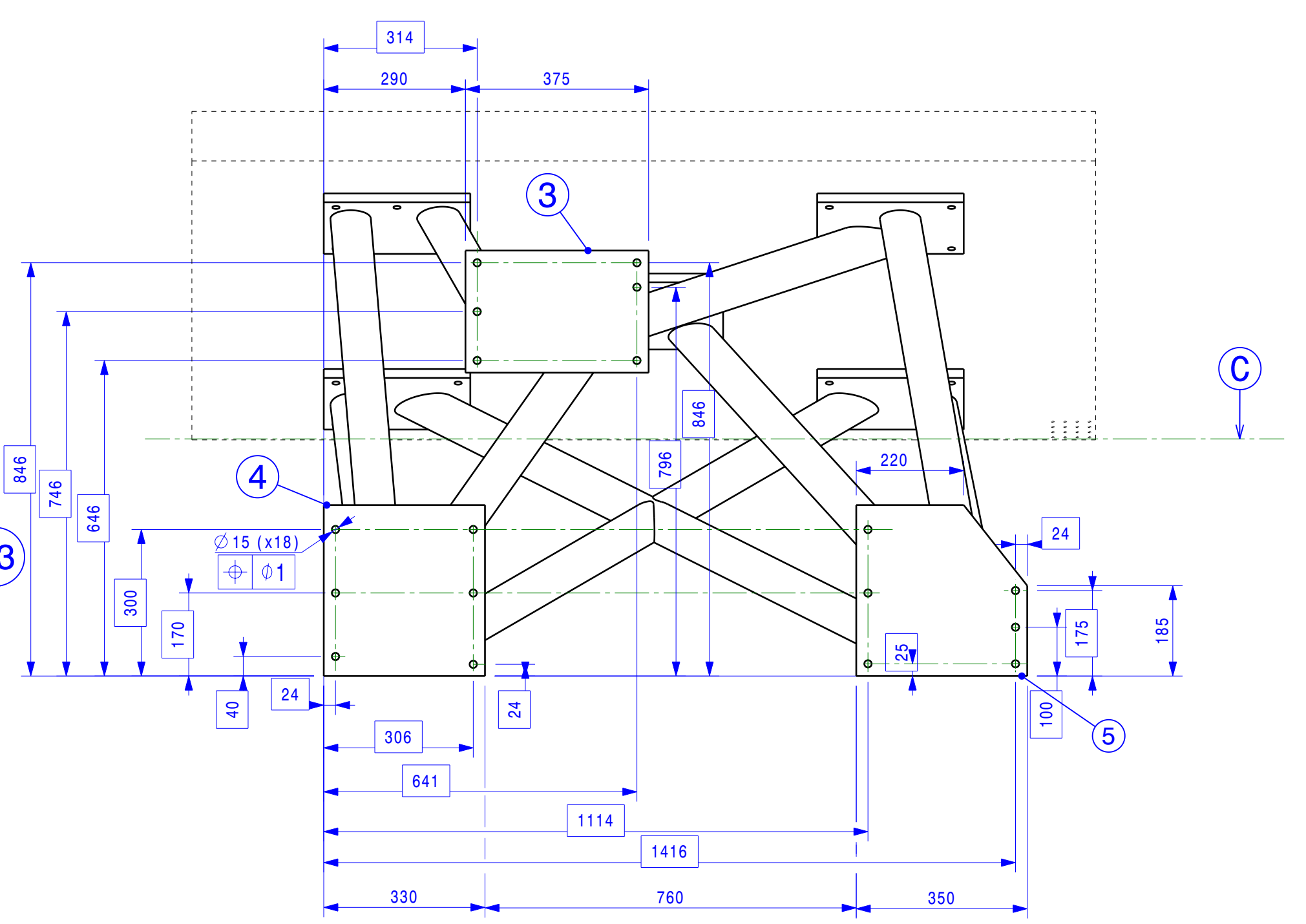
Section B-B
Scale 1:10



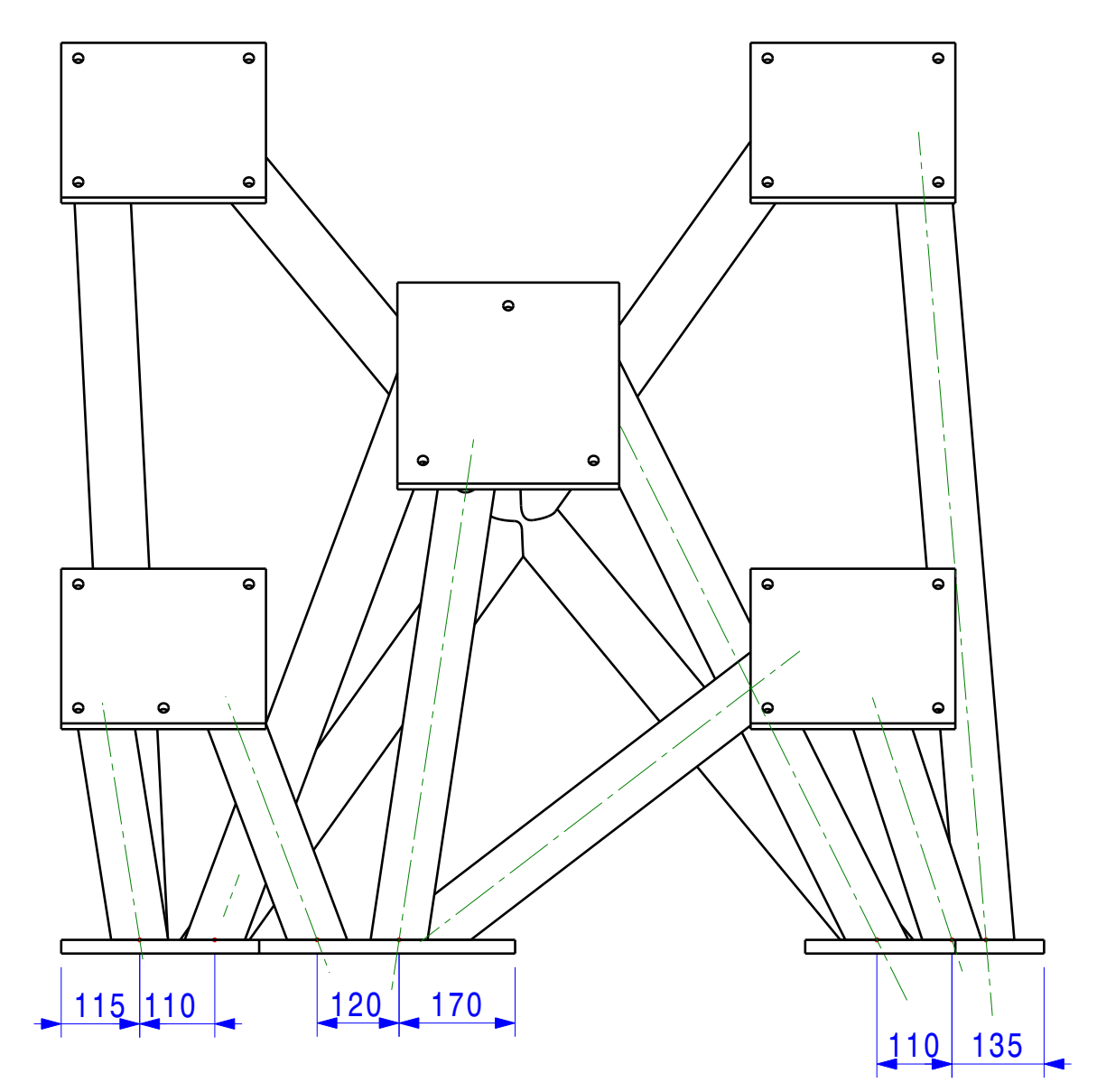
Simplified front view
Scale 1:10



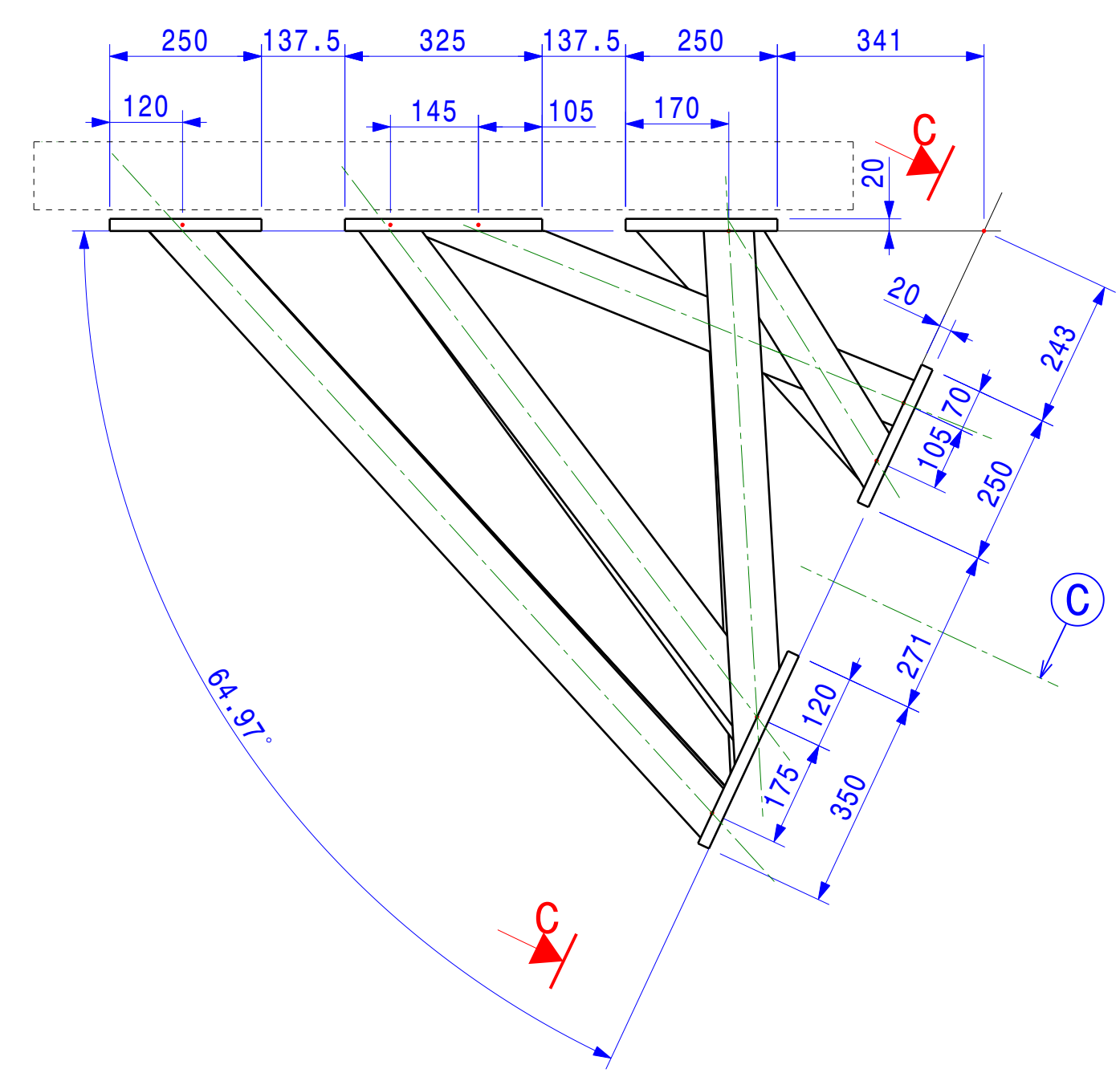
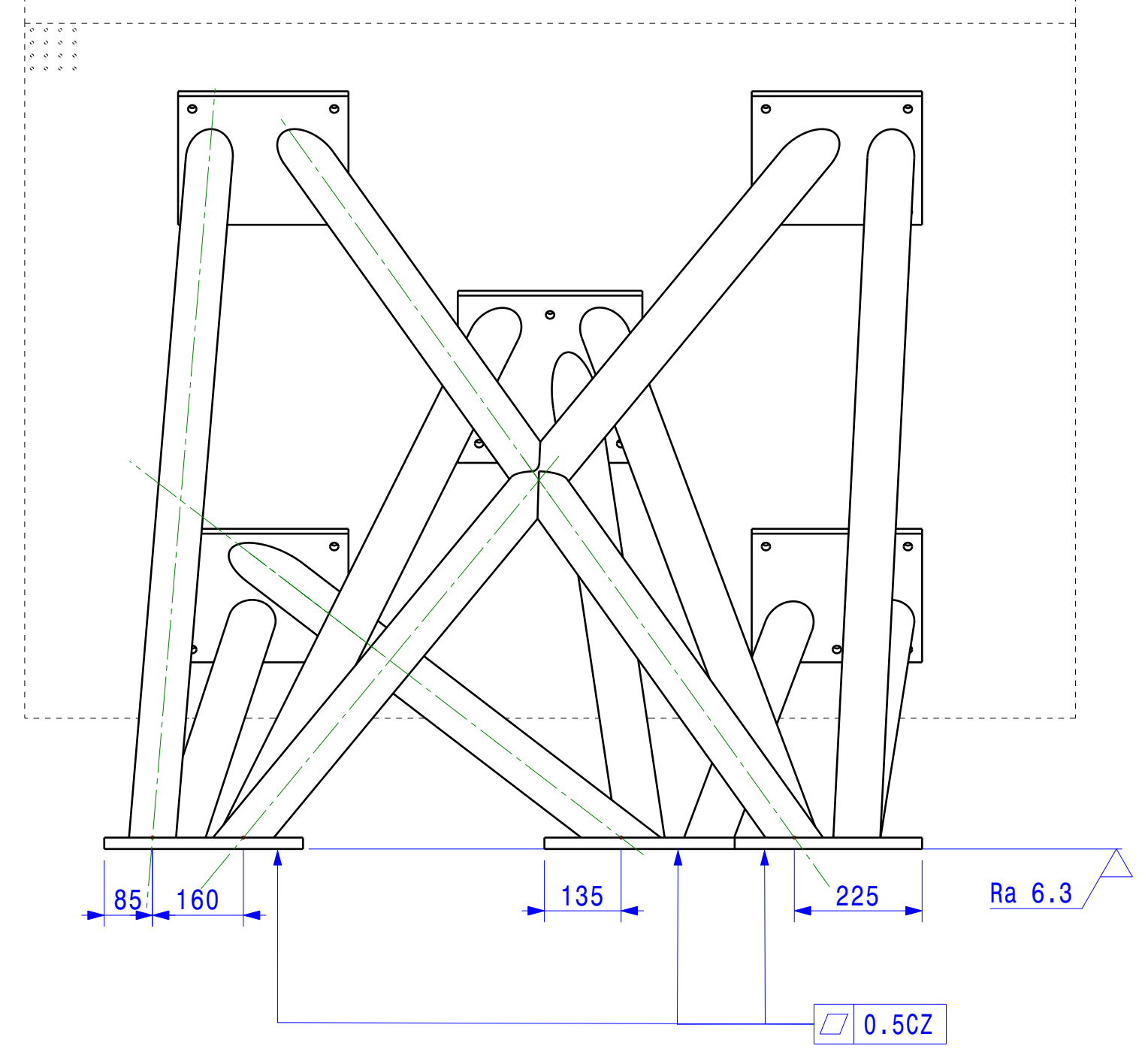
View acc. to G
Scale 1:10



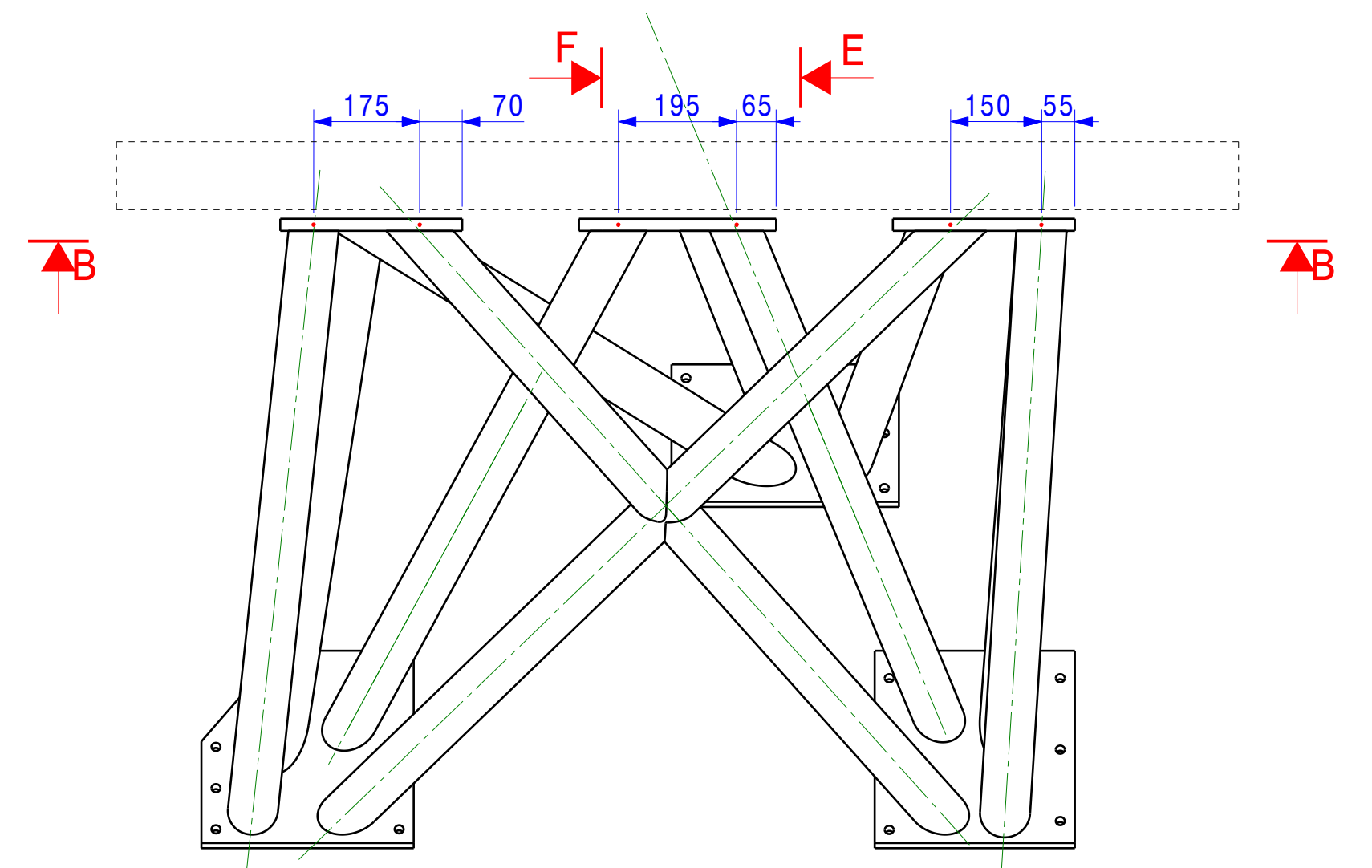
View acc. to A
Scale 1:10



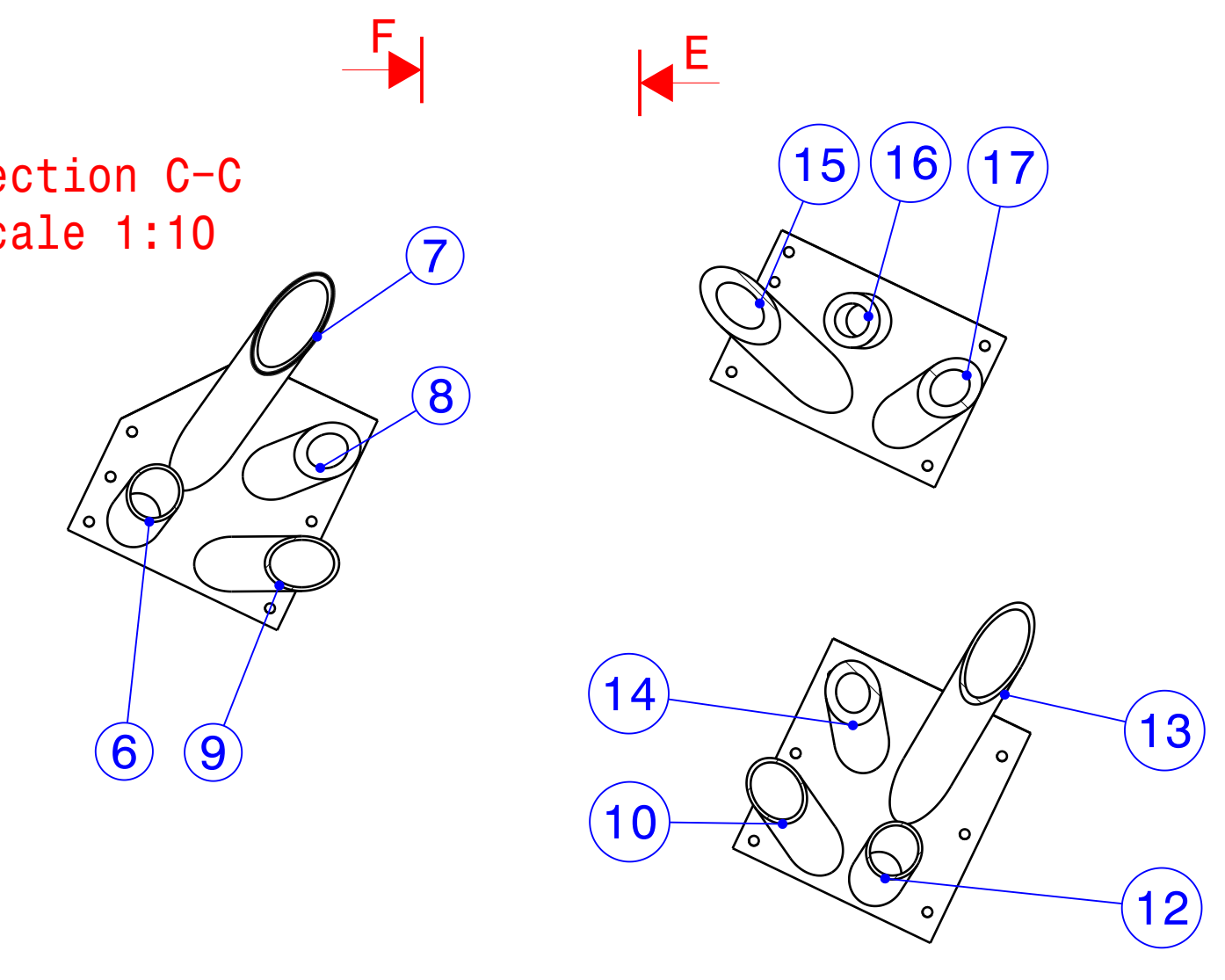
View acc. to D
Scale 1:10



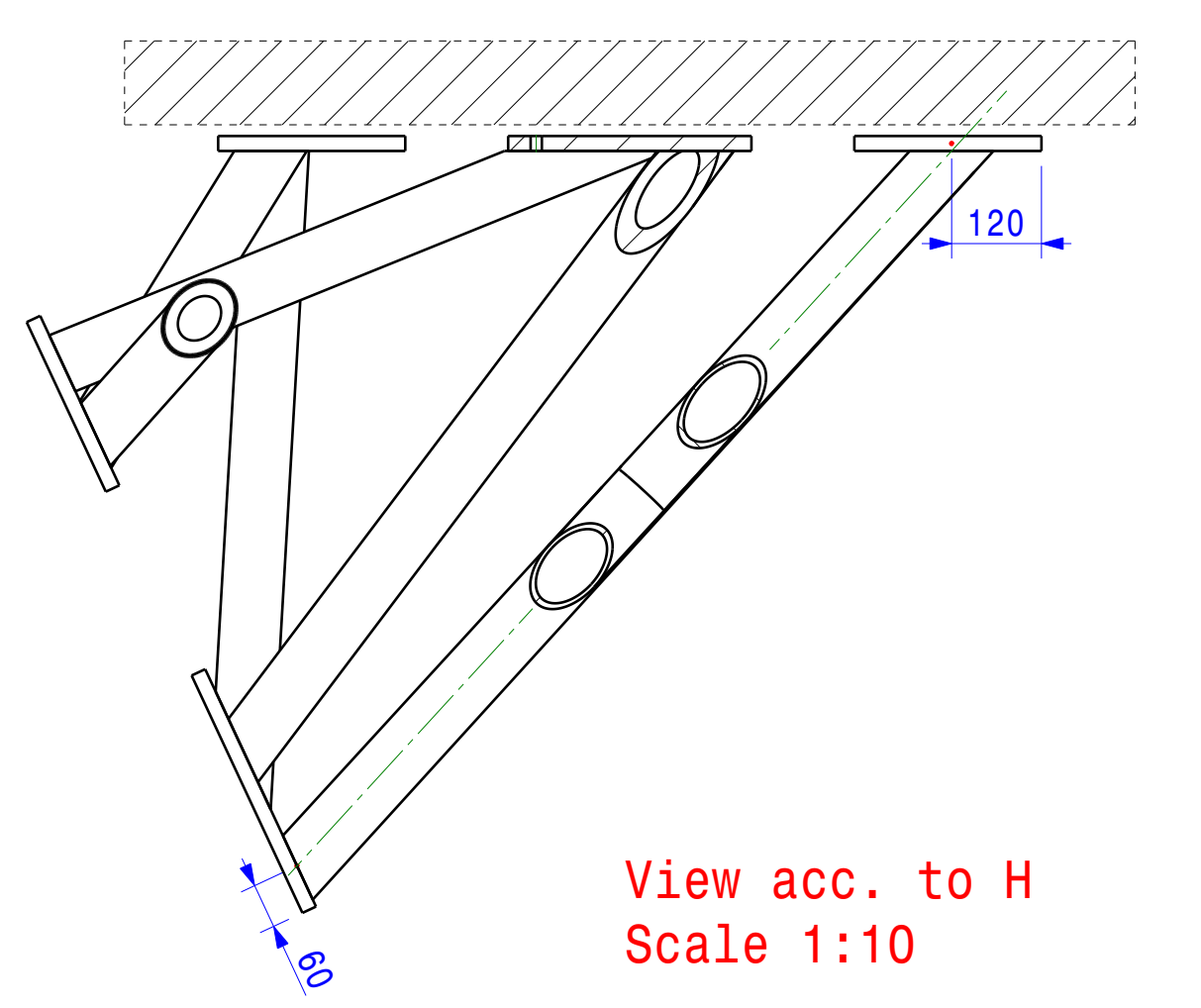
ISO View
Scale 1:10



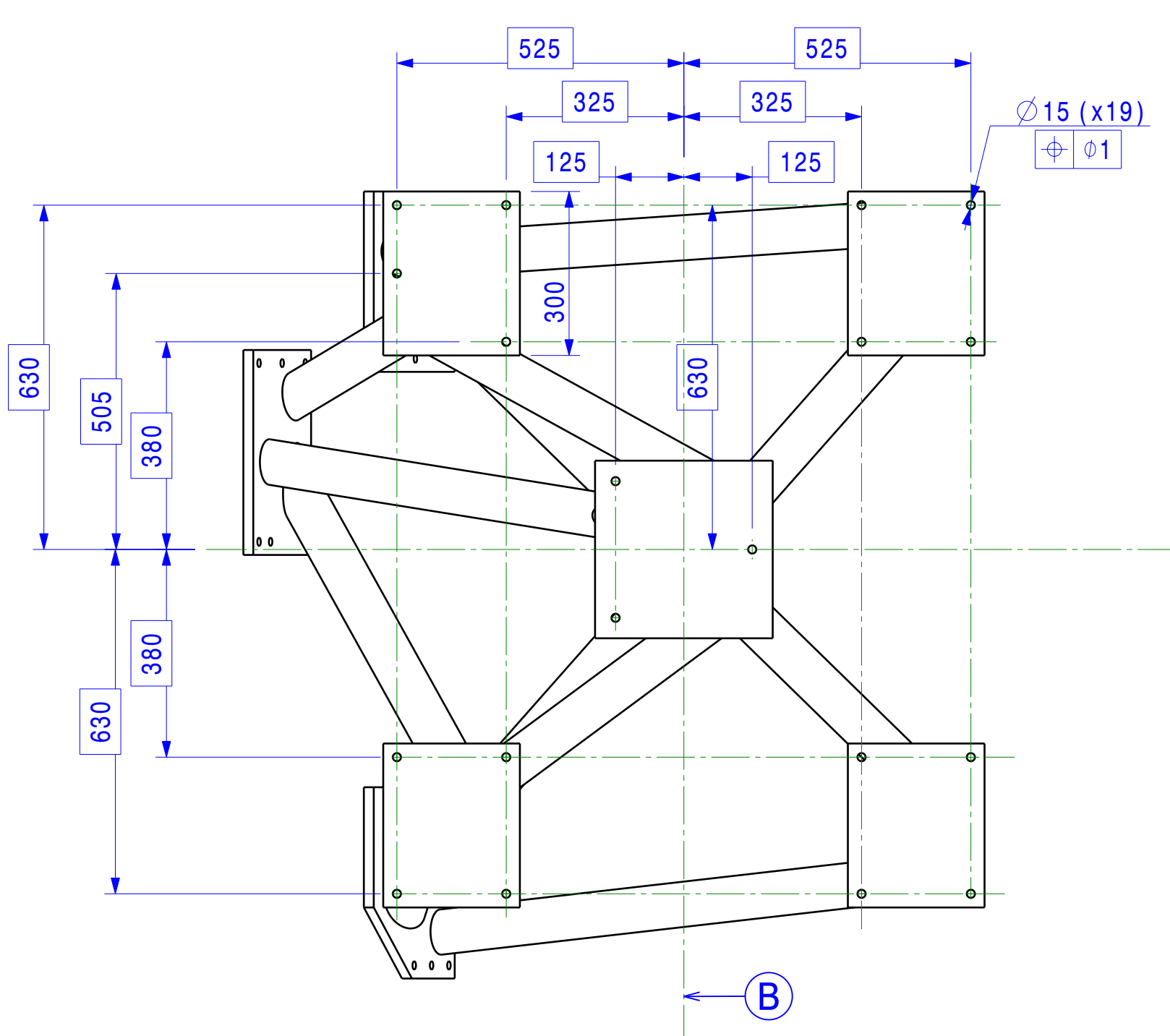
Section C-C
Scale 1:10



Section F-F
Scale 1:10



View acc. to H
Scale 1:10



Treatment
Annealing acc. to :TTH001
Painting acc. to: Acryl-PU: 3x Cryltane AC primaire RAL 9007 mat metallic (3x50µ) grey aluminium
The pieces which compose this assembly will be cut respecting the shape and the dimensions and will be carefully burred.
WELD : Unless otherwise specified all fillet shall be continuous and a=3.
Les pièces composant cet ensemble seront découpées à forme et à dimensions, et soigneusement ébavurées.
SOUDAGE : Sauf indications contraires, toutes les soudures seront continues et de a=3.

Ref	Qty	Description	Material
17	1	Tube Øoutside 82.5-th 16	SI37-2
16	1	Tube Øoutside 82.5-th 16	SI37-2
15	1	Tube Øoutside 82.5-th 16	SI37-2
14	1	Tube Øoutside 82.5-th 16	SI37-2
8	1	Tube Øoutside 82.5-th 5.6	SI37-2
12	1	Tube Øoutside 82.5-th 5.6	SI37-2
11	1	Tube Øoutside 82.5-th 5.6	SI37-2
10	1	Tube Øoutside 82.5-th 5.6	SI37-2
9	1	Tube Øoutside 82.5-th 5.6	SI37-2
8	1	Tube Øoutside 82.5-th 5.6	SI37-2
7	1	Tube Øoutside 82.5-th 5.6	SI37-2
6	1	Tube Øoutside 82.5-th 5.6	SI37-2
5	1	Bottom plate interface	SI37-2
4	1	Bottom plate interface	SI37-2
3	1	Top plate interface	SI37-2
2	4	Side plate interface	SI37-2
1	1	Central plate interface	SI37-2

Rep: N/A Ent
Name: _____
Drawing - Remarks - Material
AFL: Approved for Lay-out CFA: Certified for Application ASB: As-Built FIN: Final - to be Archived

Document: 02 AO
Form: AO
Tolerances: Manufacturing: 0.1mm (0.004")
Drawing: 0.1mm (0.004")
Date: 19/03/2008
Name: _____
Title: 2000/MROI-Ut
Detail Support
Scale: 1:10
Drawing: _____
Sheet: 1/1
Issue: A

Treatment: _____
Mass: 303.479 Kg